

# SHERIFF'S BEAR HUNT



Action  
Theatre

*The Sheriff's Bear Hunt Children's Play and Summer Book*  
Action Theatre© - [www.actiontheatreinenglish.com](http://www.actiontheatreinenglish.com)  
All rights reserved: Learning English Through Fun s.r.l.

Authors: Samuel Toye, Rupert Raison  
Didactic Contents: Nicola Kerr-Munslow, Sara Corbelletto  
Artist: Massimiliano Feroldi  
Text Editing: Giorgia Nordio  
Graphic Layout: Massimiliano Feroldi, Giorgia Nordio  
Project Supervisors: Rupert Raison, Giorgia Nordio, Lisa Pugliese

Stampato da Comunecazione di Barbero Mario - 2021

# SHERIFF'S BEAR HUNT

Children's Play and Summer Book

## INDEX

CHARACTERS	page 2
THE PLAY	page 3
LABEL THE MAP	page 12
SOLVE THE ANAGRAMS	page 13
HELP THE SHERIFF FIND THE BEAR	page 14
WHERE IS THE BEAR?	page 15
WHAT CAN THE BEAR DO?	page 17
WHAT IS THE SHERIFF DOING?	page 18
WHAT ARE THE TOWNSPEOPLE DOING?	page 19
IS OR ISN'T? ARE OR AREN'T?	page 20
THE BEAR OR THE DOG?	page 21
CROSSWORD	page 22
SOLUTIONS	page 23



# SHERIFF'S BEAR HUNT

## CHARACTERS

SHERIFF

TOWNSPEOPLE

(GEORGE, BETTY, PAT, SAM,  
VICTORIA, CATHERINE, JOHN,  
ALFRED, LIZZIE, BERTIE,  
CHARLES, REBECCA, SUSAN)

PONGO

(THE SHERIFF'S NEW DOG)



# THE PLAY

*The Bear Hunt is a traditional children's tale popularised in the version created by Michael Rosen which in turn was based on the song of the same name by the Scottish group "The Singing Kettle". Our version sets the Bear Hunt in the Far West with the protagonist as the Sheriff of Little Toe and is full of comedy and surprise.*

## SCENE ONE - IN THE TOWN OF LITTLE TOE

**TOWNSPEOPLE**  
**SHERIFF**

GOOD MORNING, SHERIFF.  
GOOD MORNING, EVERYONE.

### I'M THE SHERIFF

I'M THE SHERIFF OF LITTLE TOE  
LITTLE TOE, LITTLE TOE  
I'M THE SHERIFF OF LITTLE TOE  
LITTLE LITTLE  
TOE TOE TOE

HELLO HELLO, HELLO HELLO (X 2)

WE'RE THE PEOPLE OF LITTLE TOE  
LITTLE TOE, LITTLE TOE  
WE'RE THE PEOPLE OF LITTLE TOE  
LITTLE LITTLE  
TOE TOE TOE

HELLO HELLO, HELLO HELLO (X 4)



## SCENE TWO - IN THE TOWN OF LITTLE TOE

### People are shoeing horses and brushing a horse's hair

SHERIFF

A BEAUTIFUL HORSE, GEORGE.

BETTY

HER NAME IS LADY.

SHERIFF

HELLO, LADY.

GEORGE

DON'T STAND BEHIND HER.

*Sheriff gets kicked by the horse.*



SHERIFF

OW!

GEORGE/BETTY

NAUGHTY LADY!

### People are painting a house

PAT

ARE YOU OKAY SHERIFF?

SHERIFF

YES, I'M FINE.

SAM

BLUE IS MY FAVOURITE COLOUR.

PAT

WE'RE PAINTING THE HOUSE.

*Sheriff gets wet paint on his hands.*



SHERIFF

OH NO!

### People are selling at the market

VICTORIA

BUY YOUR APPLES HERE!

CATHERINE

ORANGES FOR A DOLLAR!

CHARLES

BIG BANANAS!

SHERIFF

CAN I HAVE A BANANA PLEASE?

CHARLES

YES SHERIFF.

SHERIFF

HOW MUCH DOES IT COST?

CHARLES

FOR YOU IT IS FREE.

SHERIFF

THANK YOU.



*He eats the banana and throws away the skin behind him.*

**CATHERINE**

**SHERIFF!**

*Sheriff slips on the banana skin.*

**SHERIFF**

**OW!**

**People are building a church**

**JOHN AND ALFRED**

**SHERIFF**

**JOHN**

**ALFRED**

**JOHN**

HELLO, SHERIFF.

CAN I HELP?

OF COURSE.

HERE IS A NAIL.

HERE IS A HAMMER.



*He misses the nail and hits his thumb with the hammer.*

**SHERIFF**

**OW!**

**People are playing cards**

**REBECCA**

**LIZZIE**

**SHERIFF**

**LIZZIE**

**BERTIE**

SIT DOWN, SHERIFF.

DO YOU WANT TO PLAY POKER?

I LIKE POKER.

YES! I WIN.

OH NO, YOU DON'T!



### SCENE THREE - IN THE TOWN OF LITTLE TOE

*Susan enters running.*

**SUSAN**  
**TOWNSPEOPLE**  
**SHERIFF**

AH! THERE IS A BEAR IN THE CAVE!  
A BEAR!?  
THERE IS NO BEAR.

*They hear a bear roar.*

**ALL**  
**TOWNSPEOPLE**  
**SHERIFF**

AHHH!  
SHERIFF! WHAT CAN WE DO?  
UHM... UHM... WE ARE GOING  
ON A BEAR HUNT.

**TOWNSPEOPLE**

HOORAY!



### SCENE FOUR - IN THE TOWN OF LITTLE TOE

*The people prepare to go on the Bear Hunt.*

**SHERIFF**

ATTENTION!  
AT EASE.  
ATTENTION!  
AT EASE.  
ATTENTION!  
WE ARE READY TO GO.  
HERE IS A MAP.  
HAH! NO THANK YOU. LET'S GO.

**SUSAN**  
**SHERIFF**

#### MARCHING SONG

LEFT RIGHT, LEFT RIGHT  
NIGHT AND DAY AND DAY AND NIGHT  
ATTENTION PLEASE  
STAND AT EASE,  
LEFT RIGHT, LEFT RIGHT





NIGHT AND DAY AND DAY AND NIGHT  
ATTENTION PLEASE  
STAND AT EASE  
UP UP UP  
UP WE GO  
THROUGH THE WIND  
AND RAIN  
AND SNOW  
DOWN DOWN DOWN  
DOWN WE GO  
WHERE WE'RE GOING  
WE DO NOT KNOW



## SCENE FIVE - BACK IN LITTLE TOE

**TOWNSPEOPLE**

SHERIFF, THERE IS NO BEAR.  
WE ARE IN THE TOWN OF LITTLE TOE.  
OH YES.

**SHERIFF**

**TOWNSPEOPLE**

THE BEAR IS IN THE CAVE.

**SUSAN**

SHERIFF. THE MAP.

**SHERIFF**

THANK YOU.

**TOWNSPEOPLE**

IT'S UPSIDE DOWN!

IT'S BACKWARDS!

**REBECCA**

THROUGH THE GRASS.

**TOWNSPEOPLE**

THROUGH THE GRASS.

**BERTIE**

JUMP THE RIVER.

**TOWNSPEOPLE**

JUMP THE RIVER.

**LIZZIE**

THROUGH THE MUD.

**TOWNSPEOPLE**

THROUGH THE MUD.

**CHARLES**

OVER A BRIDGE.

**TOWNSPEOPLE**

OVER A BRIDGE.

**ALFRED**

AND INTO THE CAVE!

**TOWNSPEOPLE**

AND INTO THE CAVE!

**CATHERINE**

WITH THE BEAR!

**ALL**

AHHH!

**JOHN**

ARE YOU ALRIGHT?

**SHERIFF**

YES, YES. LET'S GO!



## SCENE SIX - JOURNEY TO THE CAVE

### BEAR HUNT (part I)

WE'RE GOING ON A BEAR HUNT  
WE'RE GOING TO FIND A BIG BEAR  
ARE WE READY?  
YES WE ARE!

UH, OH GRASS. LONG GREEN GRASS  
WE CAN'T GO UNDER IT  
WE CAN'T GO AROUND IT  
WE'RE GOING THROUGH IT  
SWISHY SWASHY, SWISHY SWASHY

WE'RE GOING ON A BEAR HUNT  
WE'RE GOING TO FIND A BIG BEAR  
ARE WE READY?  
YES WE ARE!

UH, OH A RIVER. A DEEP COLD RIVER  
WE CAN'T GO UNDER IT  
WE CAN'T GO AROUND IT  
WE'RE GOING TO JUMP IT  
BACK... RUN... JUMP... WHEE!!!

WE'RE GOING ON A BEAR HUNT  
WE'RE GOING TO FIND A BIG BEAR!  
ARE WE READY?  
YES WE ARE!

UH, OH MUD. SMELLY BROWN MUD  
WE CAN'T GO UNDER IT  
WE CAN'T GO AROUND IT  
WE ARE GOING THROUGH IT  
SQUELCH! SQUERCH! SQUELCH! SQUERCH!



WE'RE GOING ON A BEAR HUNT  
WE'RE GOING TO FIND A BIG BEAR  
ARE WE READY?  
YES WE ARE!

UH, OH A BRIDGE. A NARROW ROPE BRIDGE  
WE CAN'T GO UNDER IT  
WE CAN'T GO AROUND IT  
WE'RE GOING OVER IT.  
WHOA! WHOA!

WE'RE GOING ON A BEAR HUNT  
WE'RE GOING TO FIND A BIG BEAR  
ARE WE READY?  
YES, WE ARE!



## SCENE SEVEN - IN THE CAVE

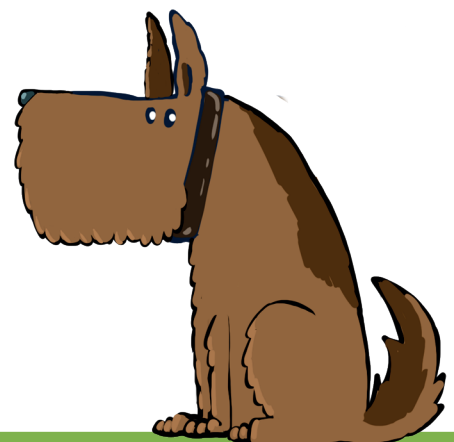
**TOWNSPEOPLE**  
**CATHERINE**  
**PAT**  
**ALFRED**  
**VICTORIA**  
**SHERIFF**

UH, OH... A CAVE.  
A DARK DANGEROUS CAVE.  
WE CAN'T GO UNDER IT.  
WE CAN'T GO AROUND IT.  
WE ARE GOING...  
IN IT.

*The Sheriff and the Townspeople slowly enter the cave.  
There is a growling sound, they all freeze.  
There is another growling sound, they freeze again.  
Then the growl turns into a dog's bark.*

**TOWNSPEOPLE** It's not a bear. It's a dog!

*They hear a bear growl.  
Townspeople and Sheriff freeze with fright.*



## SCENE EIGHT - THEY RETURN FROM THE CAVE

### BEAR HUNT (part II)

TWO BIG FURRY EARS  
ONE BIG WET NOSE  
TWO BIG SHARP TEETH  
IT'S A BEAR!

OUT OF THE CAVE, TIP TOE! TIP TOE!  
OVER THE BRIDGE, WHOA! WHOA!  
THROUGH THE MUD, SQUELCH SQUERCH! SQUELCH SQUERCH!  
OH NO! THE RIVER... STOP, RUN BACK, READY, GO, JUMP!  
THROUGH THE GRASS, SWISHY SWASHY! SWISHY SWASHY!  
RUN TO THE HOUSE... RUN, RUN...  
OPEN THE DOOR  
LOCK THE DOOR  
PHEW!

WE'RE SAFE BACK HOME  
WE'RE SAFE BACK HOME  
AND WE'RE OKAY



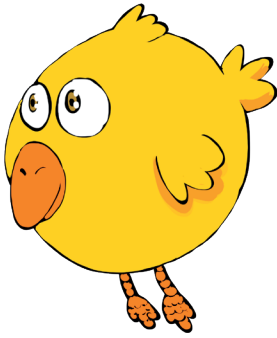
## SCENE NINE - BACK IN LITTLE TOE

REBECCA  
SHERIFF  
SUSAN  
SHERIFF

SHERIFF, WE HAVEN'T GOT THE BEAR.  
NO, BUT I HAVE A NEW DOG. GOOD BOY.  
WHAT'S HIS NAME?  
HIS NAME IS PONGO.  
OK PONGO, IT'S TIME FOR DINNER...



## GOODBYE GOODBYE, WE HAVE TO GO



GOODBYE GOODBYE,  
WE HAVE TO GO,  
GOODBYE FROM ME  
AND FROM LITTLE TOE.  
GOODBYE GOODBYE,  
WE HAVE TO GO,  
GOODBYE FROM ME  
AND FROM LITTLE TOE.  
GOODBYE GOODBYE,  
GOODBYE GOODBYE (X 2)

GOODBYE GOODBYE,  
WE HAVE TO GO,  
GOODBYE FROM ME  
AND FROM LITTLE TOE.  
GOODBYE GOODBYE,  
WE HAVE TO GO,  
GOODBYE FROM ME  
AND FROM LITTLE TOE.  
GOODBYE GOODBYE,  
GOODBYE GOODBYE (X 2)

*They hear a bear roar.  
They all freeze.*

**ALL**

**THE BEAR!**

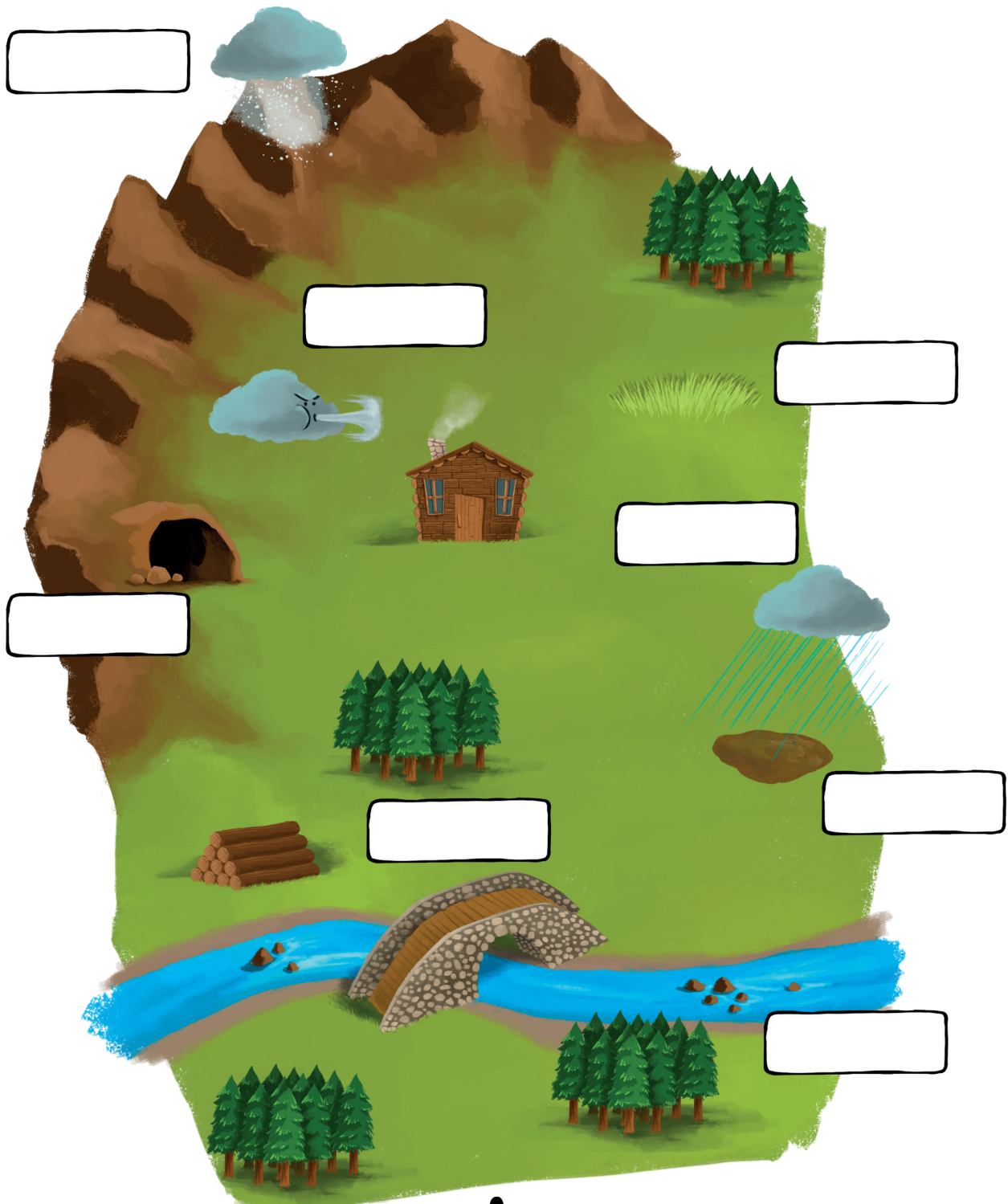
**THE END**



## LABEL THE MAP

Label the picture with the correct words

RIVER GRASS RAIN WIND  
CAVE SNOW MUD BRIDGE

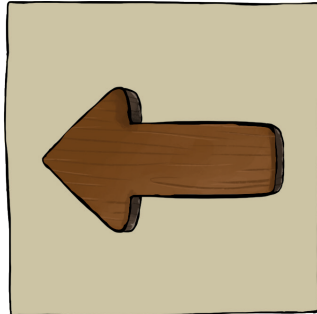


## SOLVE THE ANAGRAMS

Look, find and write the words

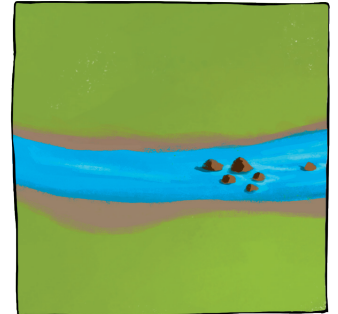
EFLT

\_\_\_\_\_



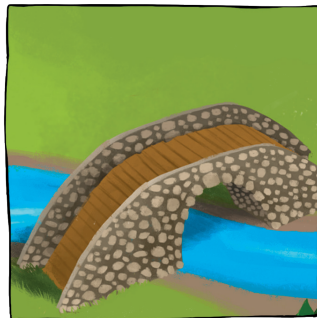
RVIRE

\_\_\_\_\_



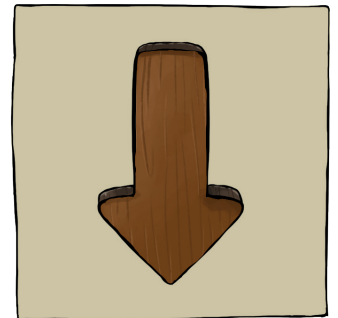
IGRBDE

\_\_\_\_\_



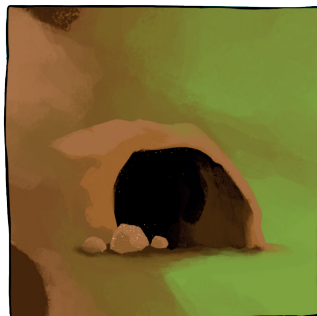
WNDO

\_\_\_\_\_



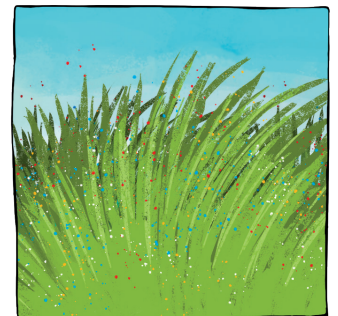
AVEC

\_\_\_\_\_



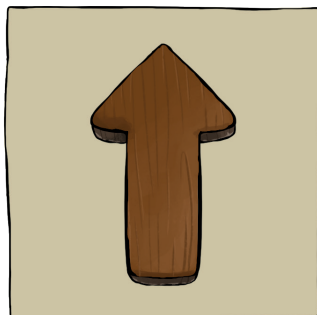
SSRGA

\_\_\_\_\_



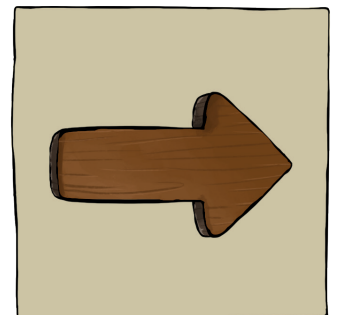
PU

\_\_\_\_\_



IRGHT

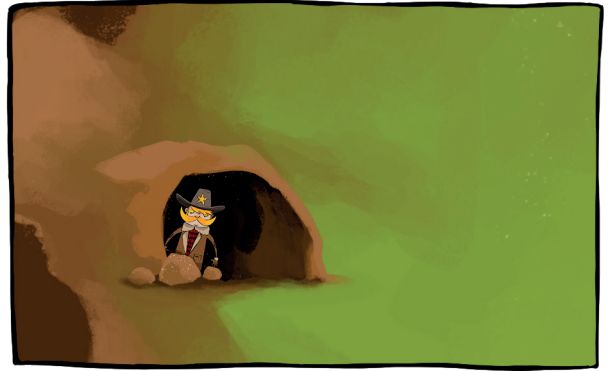
\_\_\_\_\_



## HELP THE SHERIFF FIND THE BEAR

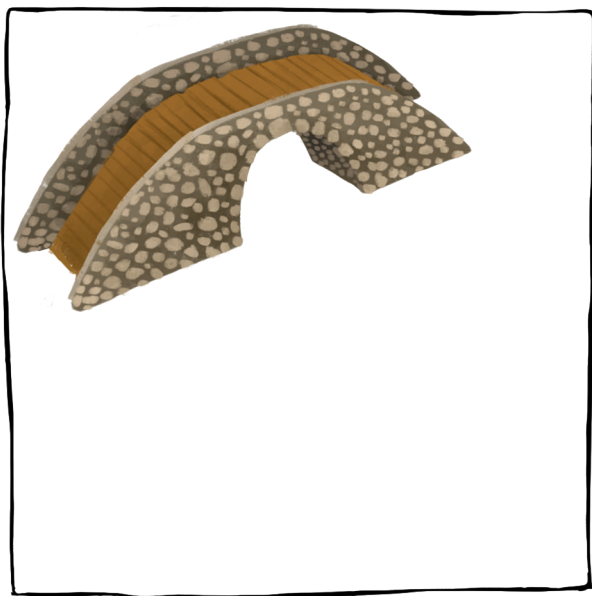
Label the pictures with the words in the box

THROUGH THE GRASS - JUMP THE RIVER - INTO THE CAVE  
THROUGH THE MUD - OVER A BRIDGE

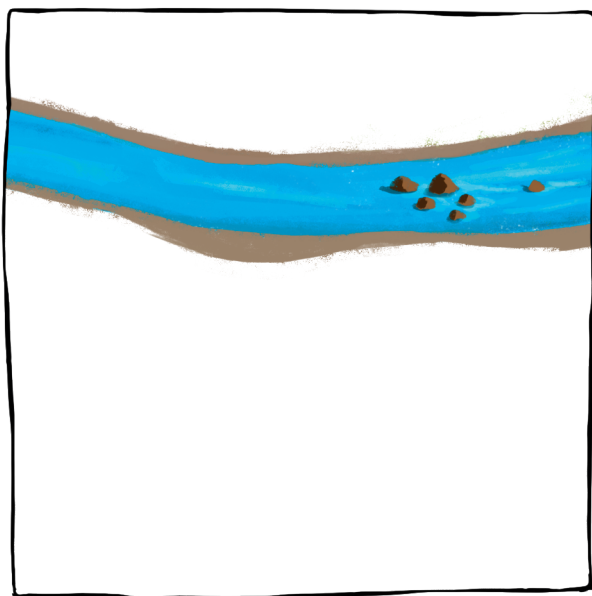


## WHERE IS THE BEAR?

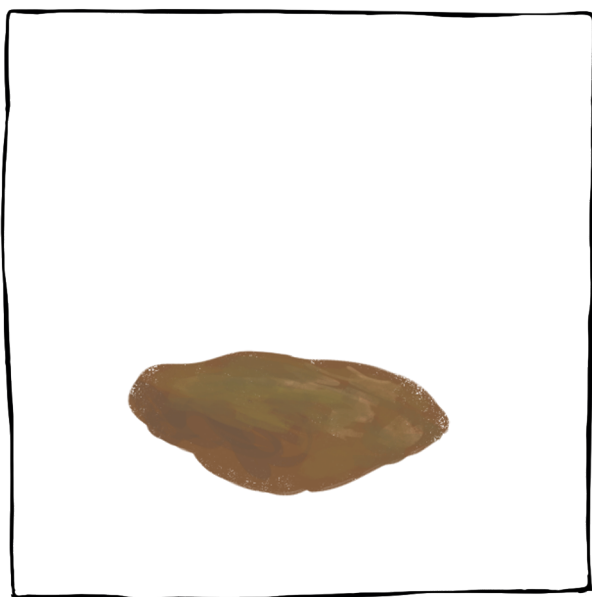
Read the instructions and complete the pictures



THE BEAR IS **UNDER** THE BRIDGE



THE BEAR IS **IN FRONT OF** THE RIVER



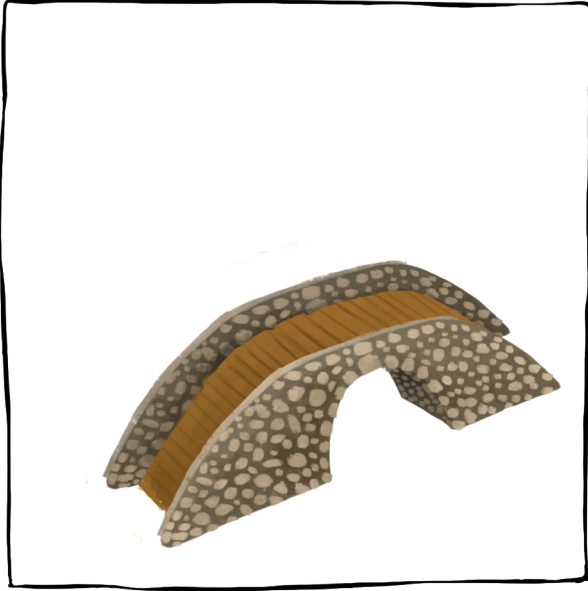
THE BEAR IS **ON** THE MUD



THE BEAR IS **BEHIND** THE TREE

## WHERE IS THE BEAR?

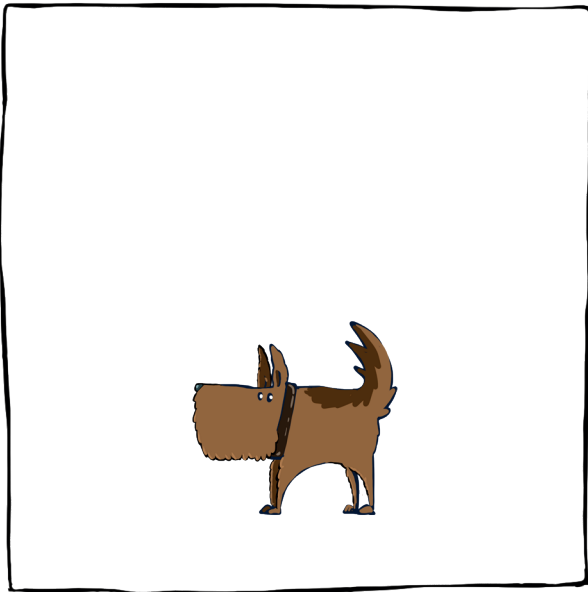
Read the instructions and complete the pictures



THE BEAR IS **OVER** THE BRIDGE



THE BEAR IS **BETWEEN**  
THE CAVE AND THE TREE



THE BEAR IS **NEXT TO** THE DOG



THE BEAR IS **IN** THE CAVE

## WHAT CAN THE BEAR DO?

Answer the questions using the short answers

YES, IT CAN ✓

NO, IT CAN'T ✗

CAN THE BEAR JUMP? ✗

---

CAN THE BEAR GROWL? ✓

---

CAN THE BEAR SWIM? ✓

---

CAN THE BEAR FLY? ✗

---

CAN THE BEAR SPEAK? ✗

---

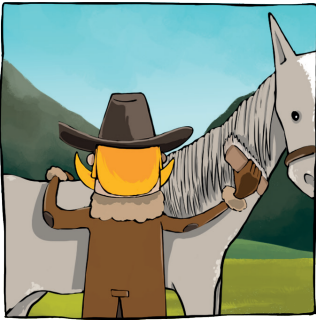
CAN THE BEAR RUN? ✓

---

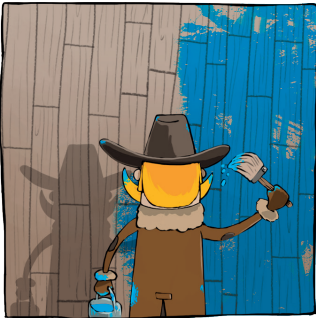


## WHAT IS THE SHERIFF DOING?

Match the sentences to the pictures



HE IS BUYING FRUIT



HE IS BRUSHING THE HORSE'S HAIR



HE IS BUILDING A CHURCH



HE IS PLAYING CARDS



HE IS PAINTING THE HOUSE

## WHAT ARE THE TOWNSPEOPLE DOING?

Choose the correct form of the Present Continuous

SHE/HE/IT IS +VERB-ING

THEY ARE +VERB-ING

BETTY \_\_\_\_\_ THE HORSE'S HAIR

IS BRUSHING

ARE BRUSHING

PAT AND THE SHERIFF \_\_\_\_\_ THE HOUSE

IS PAINTING

ARE PAINTING

THE SHERIFF \_\_\_\_\_ FRUIT

IS BUYING

ARE BUYING

JOHN \_\_\_\_\_ A CHURCH

IS BUILDING

ARE BUILDING

LIZZIE, BERTIE AND REBECCA \_\_\_\_\_ CARDS

IS PLAYING

ARE PLAYING

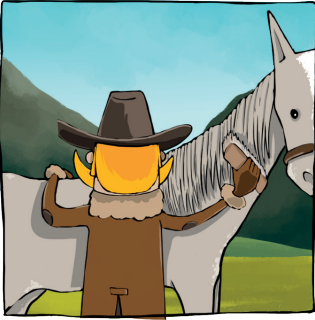
THE TOWNSPEOPLE \_\_\_\_\_ ON A BEAR HUNT

IS GOING

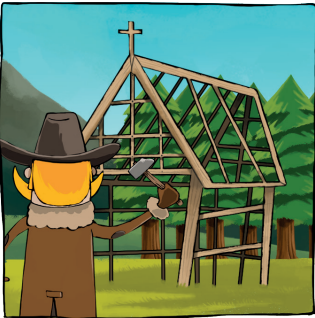
ARE GOING

## IS OR ISN'T? ARE OR AREN'T?

Complete the sentences with the correct verb



THE SHERIFF \_\_\_\_\_ PAINTING



THE SHERIFF \_\_\_\_\_ BUILDING  
THE CHURCH



THEY \_\_\_\_\_ BRUSHING THE  
HORSE'S HAIR



THE SHERIFF \_\_\_\_\_ PLAYING  
CARDS



THEY \_\_\_\_\_ GOING ON A  
BEAR HUNT

## THE BEAR OR THE DOG?

*Match the descriptions with the correct animal*

IT IS BIG

IT IS SMALL

IT IS BROWN

IT HAS TWO BIG FURRY EARS

IT HAS A LONG TAIL

IT HAS ONE BIG WET NOSE

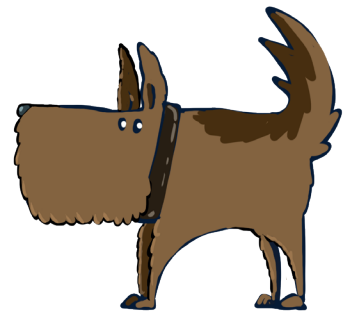
IT HAS TWO BIG SHARP TEETH

IT IS GOOD

IT HAS TWO SWEET EYES

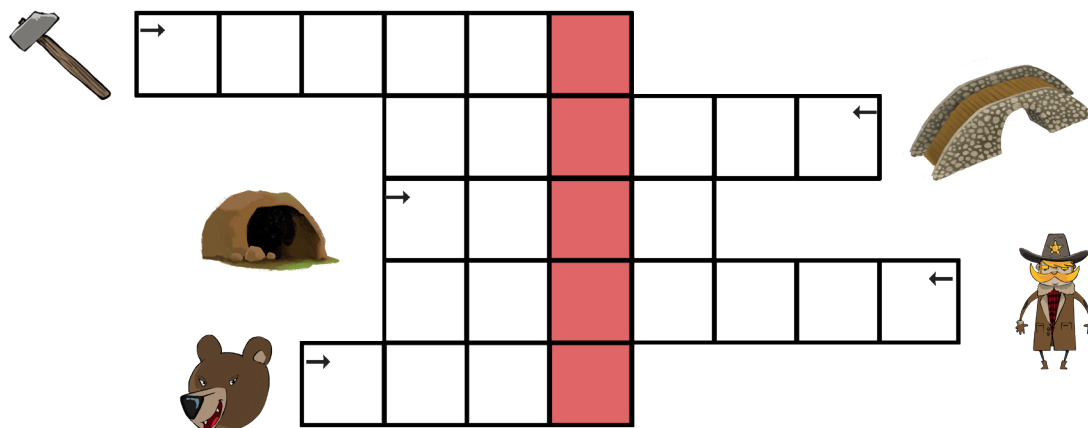
IT IS DANGEROUS

IT HAS ONE SMALL WET NOSE



# CROSSWORD

Look at the pictures and complete the grid  
Find where the bear is in the red column



What is the bear doing?



S \_ I \_ \_ \_ N \_

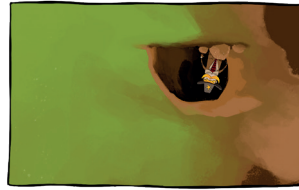
THE BEAR IS \_\_\_\_\_ IN THE \_\_\_\_\_.

# SOLUTIONS

OVER A BRIDGE

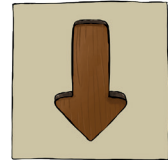


INTO THE CAVE

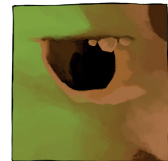


HELP THE SHERIFF FIND THE BEAR

UP



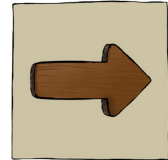
CAVE



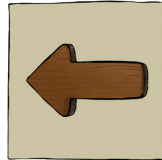
BRIDGE



LEFT



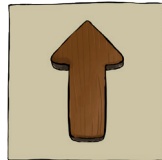
RIGHT



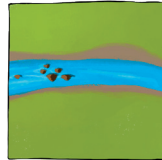
GRASS



DOWN



RIVER

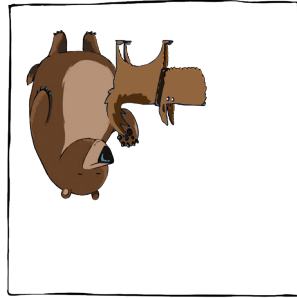


SOLVE THE ANAGRAMS

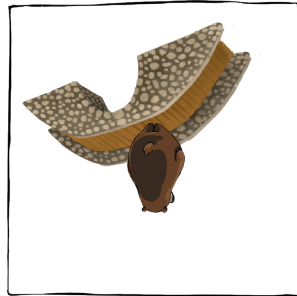


LABEL THE MAP

THE BEAR IS NEXT TO  
THE DOG



THE BEAR IS OVER THE  
BRIDGE



THE BEAR IS ON THE  
MUD



THE BEAR IS UNDER THE  
BRIDGE



THE BEAR IS IN THE  
CAVE



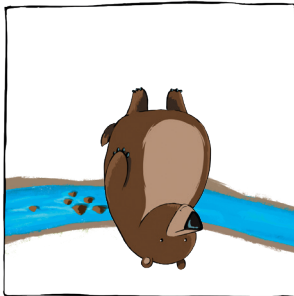
THE BEAR IS BETWEEN  
THE CAVE AND THE TREE



THE BEAR IS BEHIND THE  
TREE



THE BEAR IS IN FRONT OF  
THE RIVER



WHERE IS THE BEAR?

THROUGH THE MUD



THROUGH THE GRASS

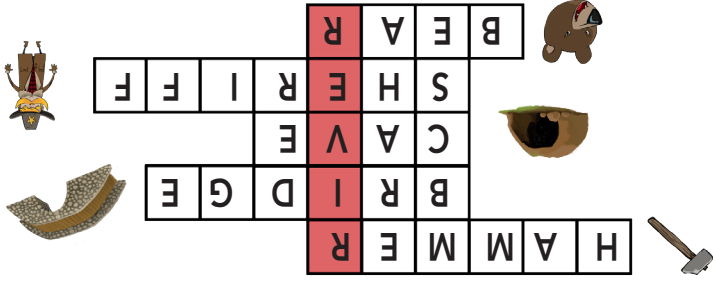


JUMP THE RIVER



# SOLUTIONS

THE BEAR IS SWIMMING IN THE RIVER



CROSSWORD

THE TOWNSPEOPLE ARE GOING ON A BEAR HUNT

LIZZIE, BERTIE AND REBECCA ARE PLAYING CARDS

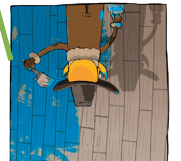
JOHN IS BUILDING A CHURCH

THE SHERIFF IS BUYING FRUIT

PAT AND THE SHERIFF ARE PAINTING THE HOUSE

BETTY IS BRUSHING THE HORSE'S HAIR

WHAT ARE THE TOWNSPEOPLE DOING?



HE IS PAINTING THE HOUSE

HE IS PLAYING CARDS

HE IS BUILDING A CHURCH

HE IS BRUSHING THE HORSE'S HAIR

HE IS BUYING FRUIT

WHAT IS THE SHERIFF DOING?

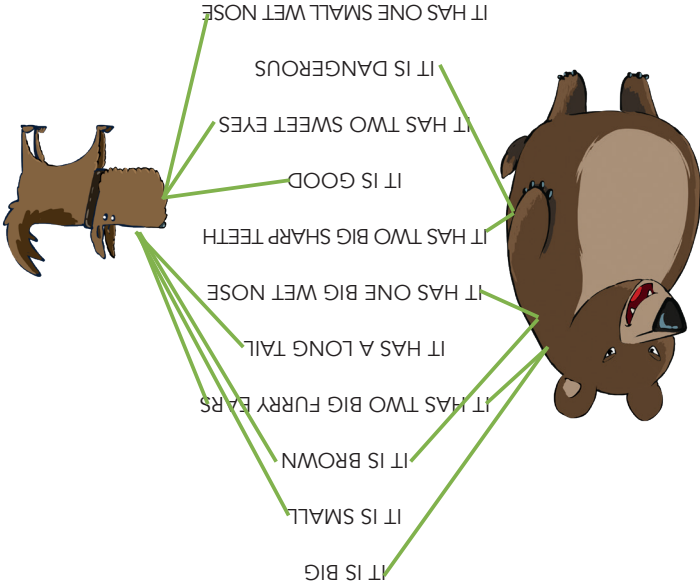


THEY ARE GOING ON A BEAR HUNT

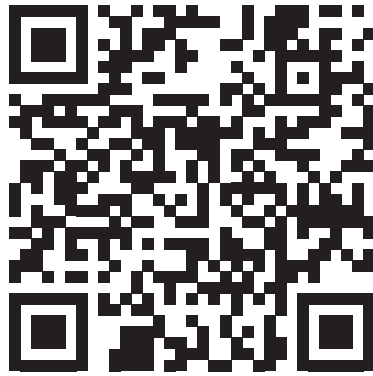
THE SHERIFF IS PLAYING CARDS

THEY AREN'T BRUSHING THE HORSE'S HAIR

THE BEAR OR THE DOG?



scopri chi siamo





# Action Theatre

Learning English  
Through Fun